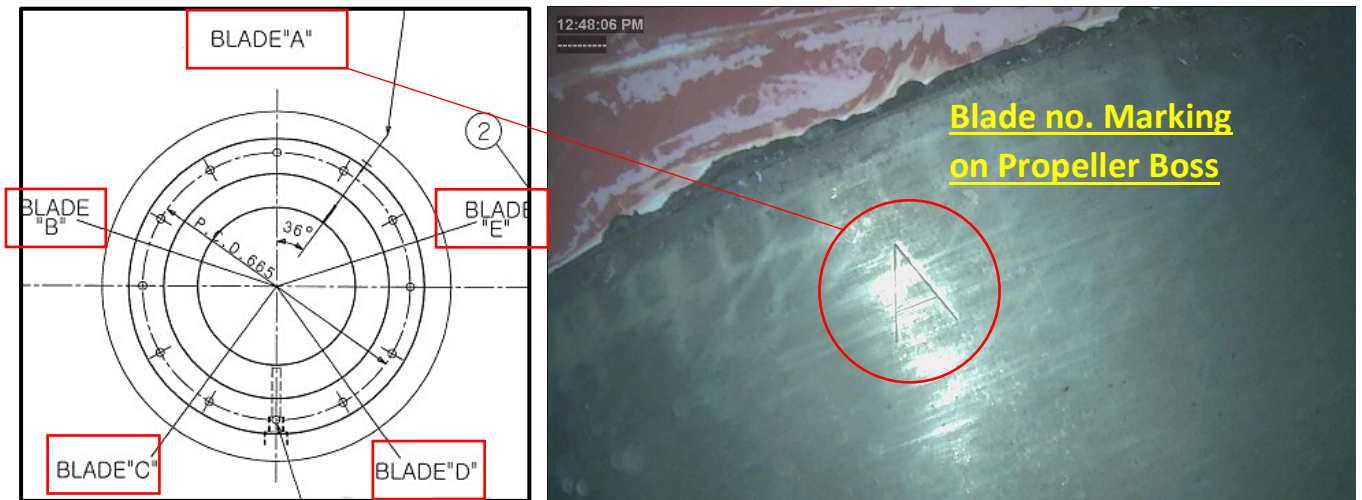


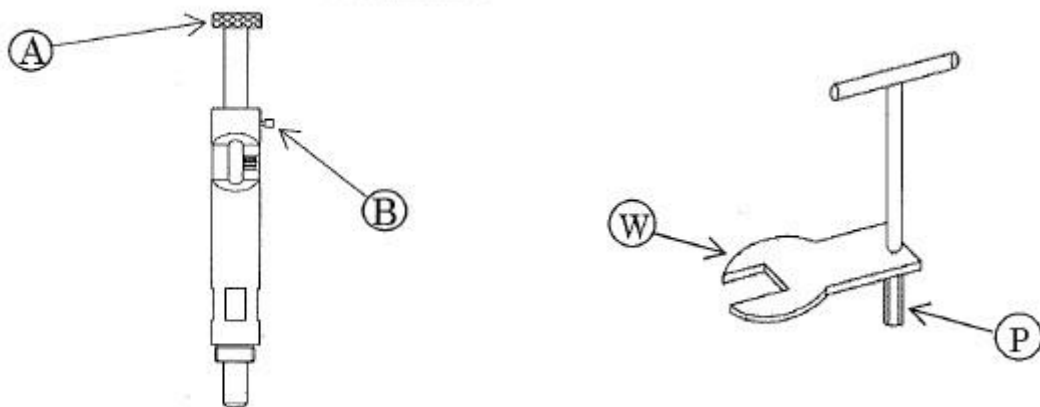
Appendix-B

PROCEDURE FOR CHECKING STERN TUBE BEARING WEARDOWN (PROPELLER DROP)

1. Measurement of the wear down shall be taken by Divers at the gauge positions Provided on cover ring.
2. Safety Checklist filled and Two-way communication setup and tested between Diver and Survey Boat.
3. Confirm that Tail shaft is in the specified position of measurement and Turning gear locked. Blade "A" in the Upper most position.



4. Necessary Tools to be carried by divers which may include Wear Down gauge (Poker gauge), Hammer, Wrenches, Screw driver etc.



5. Plug at Top and Bottom of cover ring to be removed by wrench, Copper packings underneath the plug to be removed by screw driver and clean the faces where the gauge attached

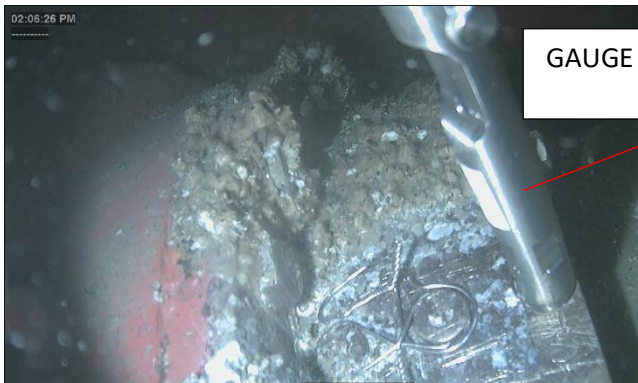




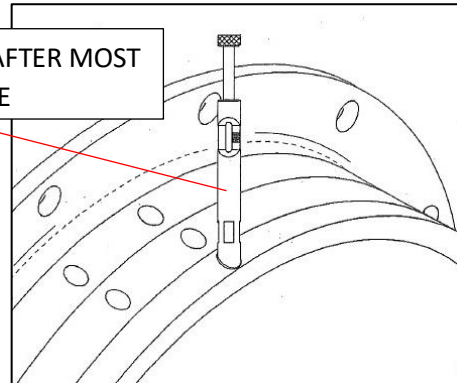
TO ENSURE THAT THIS FACE IS CLEANED BEFORE FITTING THE GAUGE

BOTH TOP AND BOTTOM PLUGS AND
COPPER PACKINGS OUT

6. Attach the wear down gauge through the measuring holes and tighten by wrench



GAUGE FITTED IN AFTER MOST
OIL HOLE



MEASURING TOP READING



FITTING GAUGE IN BOTTOM OIL HOLE



MEASURING BOTTOM READING

7. Take measurement and secure the scale with screw stopper, Detach the gauge without touching the scale and the stopper, the measurement to be inspected by the surveyor.



TOP WEARDOWN READING



LOWER WEARDOWN READING



8. Take both upper and lower readings twice to reconfirm that there is no error in taking the measurement.
9. Refit the plug by wrench /Allen key
10. Wear down gauge and all other tools to be washed with fresh water and coated with light oil after use.